

# WG6

# POLISHING

# SYSTEM



---

Deliver excellent surface finishes with the fastest possible production rates with the WG6 for geological thin section polishing.

---



[Logitech.uk.com](http://Logitech.uk.com)

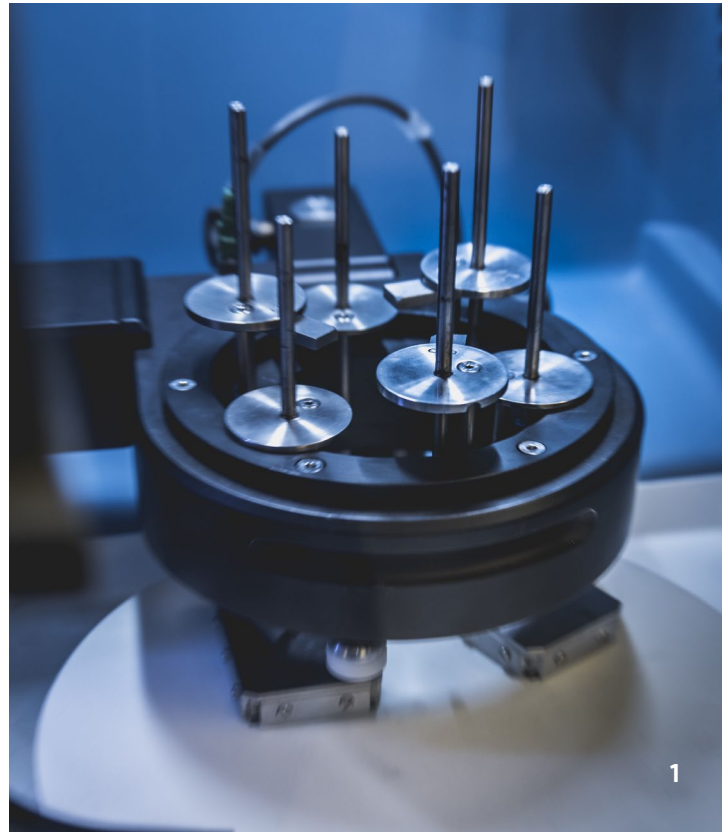
# WG6

## POLISHING SYSTEM

The WG6 Polishing System delivers excellent surface finishes with the fastest possible production rates. This highly economical system is ideal for polishing rock sections, metallurgical specimens, ore mounts and soils.

Comprising of a PM6 or LP70 precision lapping & polishing system and a WG6 polishing head, this system is capable of producing the desired finished sample to a very high standard. This can be high reflectivity, low relief, ultra flat surfaces or minimal edge roll off.

This system is highly versatile, offering a wide range of facilities including variable plate and carousel speed and rotational direction. Samples can be polished individually or in batches, using a variety of sample holders.



## KEY FEATURES & FUNCTIONALITY

- Process up to 6 of 26 x 46 mm samples on the PM6 with one WG6 head or 12 of 26 x 46 mm samples on the LP70 with two WG6 head's simultaneously.
- Produce the desired finished sample to a very high standard - high reflectivity, low relief, ultra-flat surfaces or minimal edge roll off.
- Variety of sample holders are available specific to customers sample requirements. With the option of 6, 3, or 1 slide retention holder in varying sizes.
- Powerful, low voltage motor provides sufficient torque to rotate the fully loaded carousel at a speed of up to 50rpm.
- WG6 seamlessly integrates with PM6 and LP70 control system, the user can access controls to the WG6 via the Graphical User Interface on the machine.
- Samples are retained by six drive rods, enabling each specimen to rotate independently.
- Incremental loads of up to 1.4kg may be placed on each drive rod to assist with the polishing process. A double load bar provides the facility to increase loading at three positions for large area specimens.
- Robust polishing head is made from corrosion resistant materials. withstanding messy geological processes.
- Typically Logitech routinely prepare six samples of polished rock/ore thin sections from 38-40 microns, to a 30 micron thickness within two hours on a WG6 polishing head.

## SAMPLE HOLDERS

- Standard slide holders are manufactured in stainless steel and aluminium. Samples are retained by a drop of polishing fluid or a thin oil against the ground surface, there is a circular hole in the back face for the drive rod.
- Resin mount blocks are normally drilled by the customer for drive rod location - however, holders for this purpose and other non-standard specimen geometrics can be supplied to customer specifications.
- Sample holders are supplied based on customers sample requirements with the option of:
  - 26 x 46mm (six at one time)
  - 28 x 28mm (six at one time)
  - 51 x 76mm (three at one time)
  - 26 x 27mm (three at one time)
  - other as specified by customer

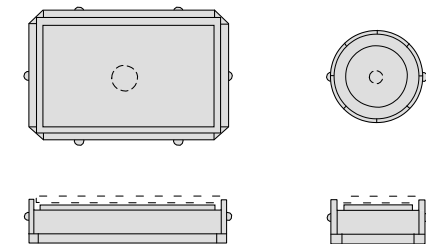


Image 1: WG6 Polishing Head on PM6 Precision Lapping & Polishing System

Image 2: Ideal for the polishing of thin sections including rock, metallurgical specimens, ore mounts and soils.

Image 3: Slide retention holders are supplied to customers required sample size.

## TECHNICAL SPECIFICATIONS: WG6

Specimen height:	0 - 25mm
Max. sample dimension:	Set by the distance between drive rods (57 - 53mm)
Power supply:	12v d.c. from machine
Height:	270mm
Net weight:	21kg
Max. sample load:	1.4kg
Carousel speed:	0-50rpm
Ordering data: (slide retention holders must be ordered in addition to WG6 polishing head)	1WG60 : WG6 thin section driven polishing head only 1WG20-1700: WG6 slide retention holders 6 off 26 x 46 mm 1WG20-1600: WG6 slide retention holders 3 off 51 x 76 mm 1WG20-2200: WG6 slide retention holders 3 off 26 x 76 mm 1WG60-1200: WG6 slide retention holders 1 off 76 x 110 mm